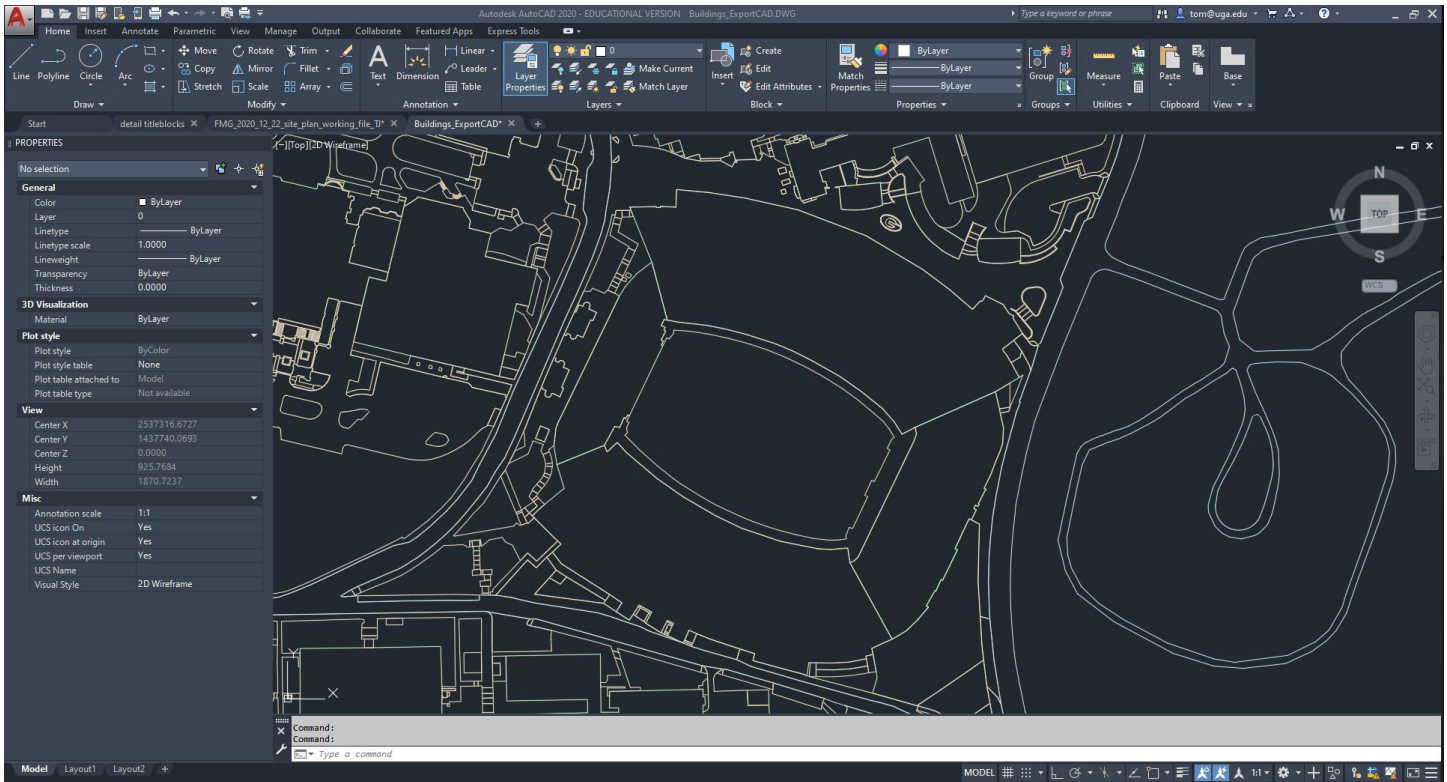
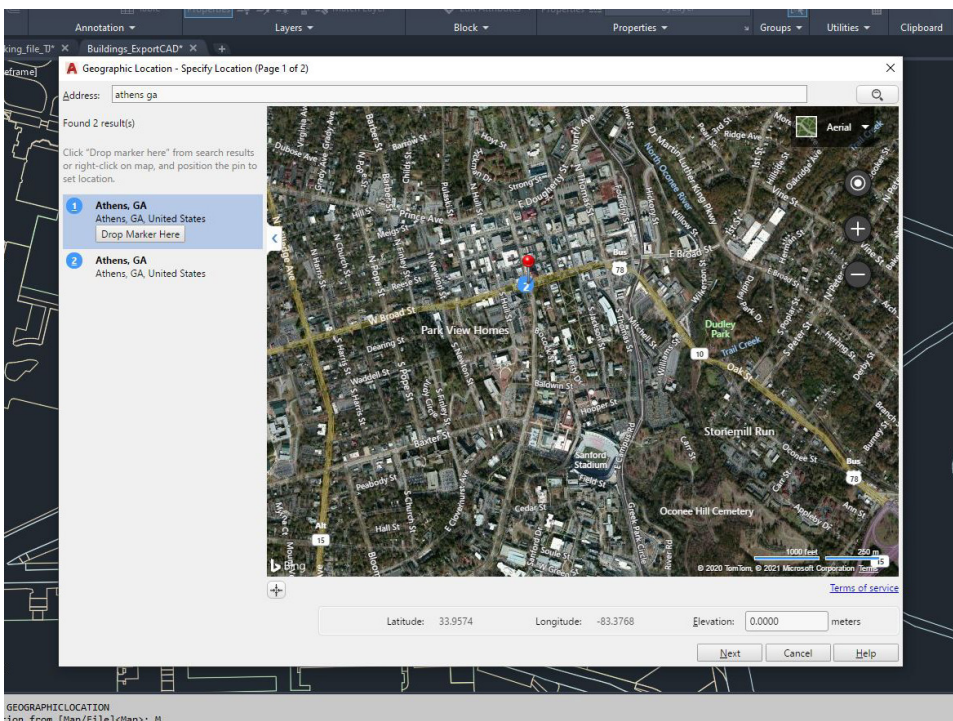


Geographic Location in CAD

The following is a reference guide for assigning a geographic location to a site in AutoCAD.



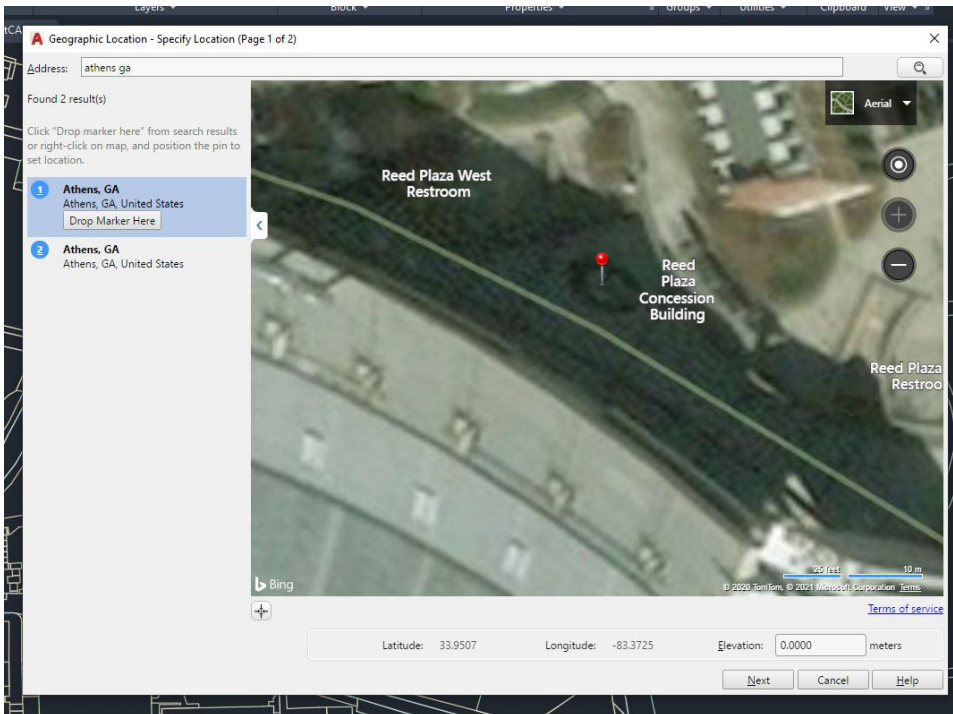
Open the CAD file and zoom in to an easily recognizable area or feature.



Enter **GEOGRAPHICLOCATION** to start the process. You will have to log in to your Autodesk account to use this feature. If you don't have one, they are free to create.

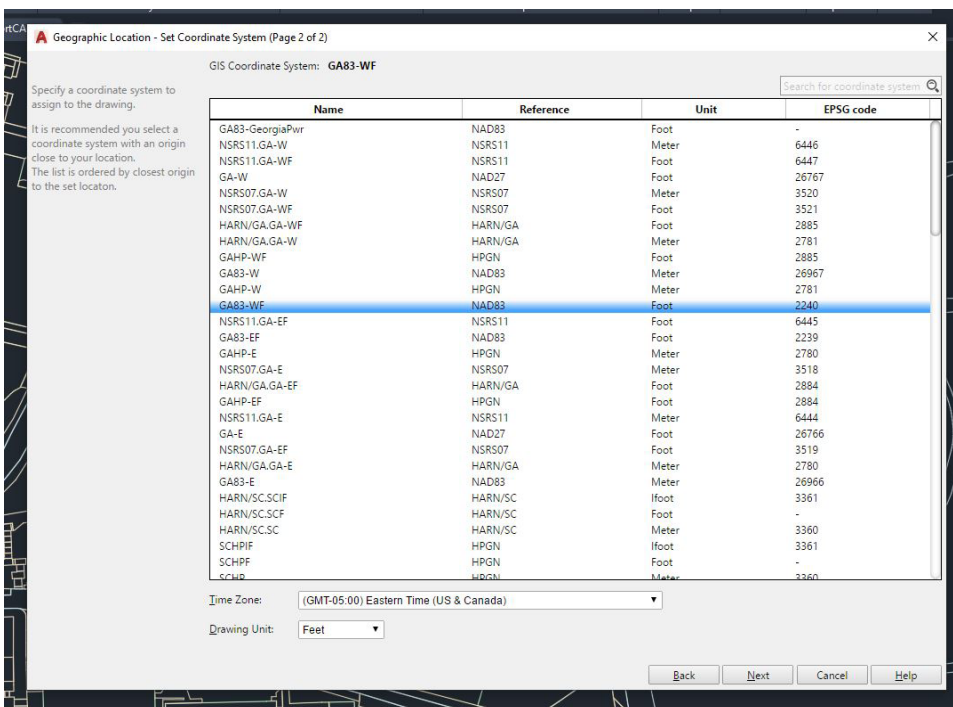
Choose **M** for the Map option.

When the window opens use the search tool to type an address, or town, etc., then select **Drop Marker Here**. Next, zoom and pan until your specific location is shown, dragging the marker as you go.



Find an easily identified feature on the map that also exists in your CAD file, as close to ground level as you can, and drag the marker to that spot. It's important to use something at ground level to improve accuracy and avoid guessing where a building corner actually hits the ground.

Click Next when you're satisfied with the location.

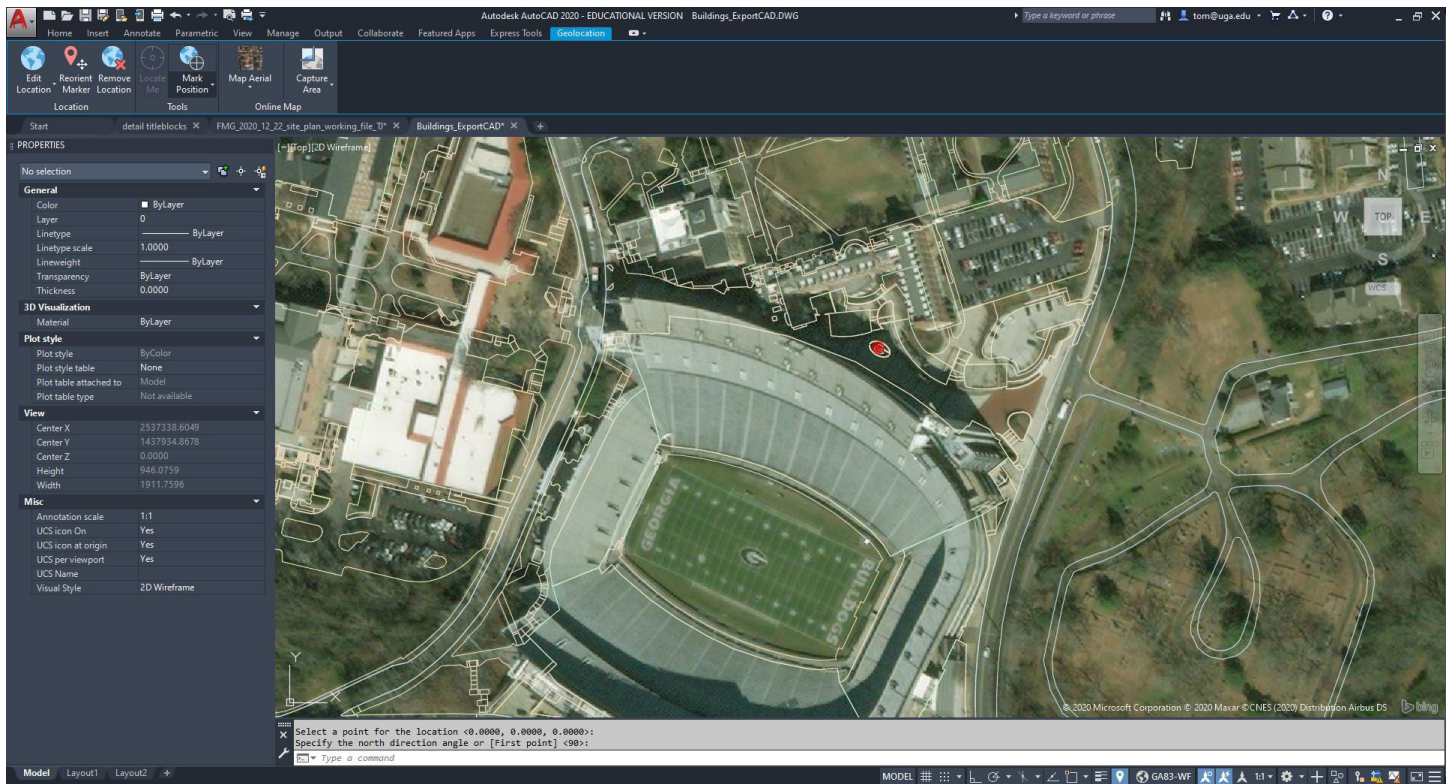


Set the Time Zone and Drawing Units, then chose a Coordinate System. Ideally this will be set to match the other GIS data you have for the project.

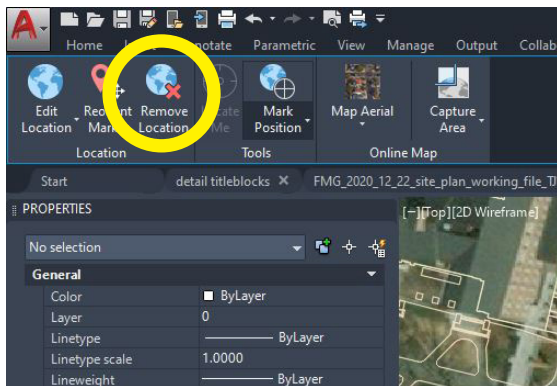
Click Next to continue.

For more help on this topic, copy and paste this url into your web browser:

<https://knowledge.autodesk.com/support/autocad/learn-explore/caas/CloudHelp/cloudhelp/2020/ENU/AutoCAD-Core/files/GUID-4138A163-80D8-435B-B1FD-878E14FC8E9F-htm.html>



Find the same feature in your CAD file and click to place the marker in CAD, then enter any variation in North angle in your CAD file (i.e. is North 90 degrees?), then wait for the reference aerial to come into place. Pan around and check accuracy. If things are not aligning closely, undo the process and select another point to use as a reference.



Be sure no one clicks Remove Location.

To confirm location is set, notice the coordinate system is shown in the status bar. A “geographic marker” is placed in the CAD file showing the spot chosen, the display of which can be toggled on the status bar.

